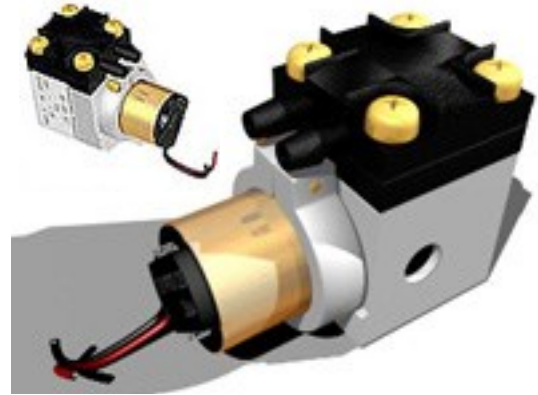


MINIATURE PRECISION GAS PUMPS AS SERIES

AS-200 Micro Pump

Specifications / Technical Data:

- Normal Operating RPM: 7500
- Normal Ambient Min/Max: 0 C / 40 C (104 F)
- Relative Humidity Min/Max: 0.1 / .095
- Current draw : at 5 VDCc no load is 30 mA
- Voltage in: 3-5 Volts DC
- Flow Range 0-0.43 L/Min. free flow
- Max. continuous vacuum: 3 in. HG
- Max. continuous pressure: 1.5 psig
- Weight: 0.63 oz. (18 g)
- Head Material: Polycarbonate (Standard)

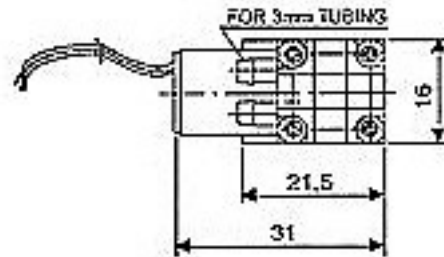
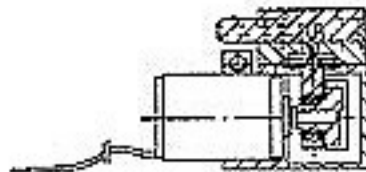
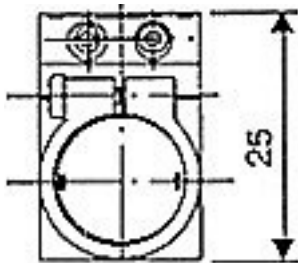
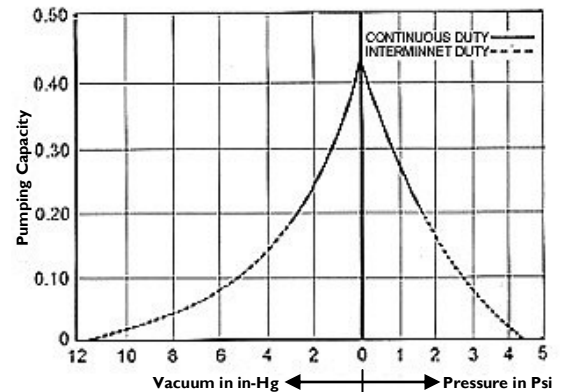


Standard Features:

- 100% Oil - free
- Maintenance free
- Contamination - free pumping of air or gas
- Dynamically balanced for low vibration
- Minimum noise

Applications:

- Medical instruments
- Emission Test Equipment
- Air & Gas Monitors
- Combustion Analyzers
- And Many others



Note: All Dimensions in Millimeters

Maximum performance parameters with standard motor

Volt	Flow		Pressure		Vacuum	
	L/Min	mA	Psig	mA	In H	Ma
3.0	0,17	20	2.4	44	10.0	49
4.0	0.29	28	3.5	55	11.0	53
5.0	0.43	30	4.4	63	11.5	56

300 series

The Spectrex 300 series gas pumps use a high quality "tape - deck" type D.C. motor and provide extremely low power, high efficiency pumping for gases. They use a special formed "Viton" diaphragm and highly stable mylar valves. A specially designed mechanism provides variable stroke which can be set with extreme precision. As the monitor can take from 3 - 15 volts D.C., the combination of correct stroke and voltage produce a highly efficient system.

AS-300



Features:

- Wide flow range 0-3 LPM
- Variable stroke
- 3 - 15V D.C. operation
- Low Current
- Over 10,000 hour operating life
- Mounts in any direction
- Inert materials, mylar, delrin and "viton"
- 0 - 180 Vacuum Inch H₂O

Applications:

- Industrial hygiene

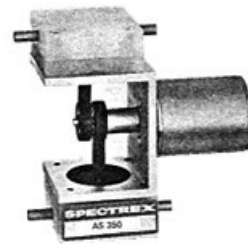
- Medical instruments

- Particle detection

Stability:

Both models have extremely stable flow, and long term tests have consistently shown less than 3% flow change over 7 - day sampling periods.

AS-350



Features:

- Wide flow range 1-6 LPM
- Vacuum to 20° mercury
- 3 - 15V D.C. operation
- Low Current
- Over 10,000 hour operating life
- Mounts in any direction
- Inert materials, mylar, delrin and "viton"
- 0 - 270 Vacuum Inch H₂O

